





**DN LED**

# DN LED

Sospensione industriale a LED per l'illuminazione di capannoni e di aree commerciali IP65  
IP65 LED industrial fitting for lighting warehouses and commercial areas

Corpo in lamiera d'alluminio tornito in lastra, verniciata con polveri epossidiche con alta resistenza alla corrosione con pretrattamento di fosfocromatazione.

Vetro temperato trasparente antishock termico, anello di fissaggio in lamiera zincata con maniglia di apertura e blocco di sicurezza. Guarnizione in silicone.

Dissipatore: alluminio anodizzato.

Pressacavo PG11 in nylon per cavo tripolare.

Alimentazione incorporata: CAE elettronica, DIM dimmerabile 1-10V o DALI.

Riflettore in alluminio tornito 99.85%, ossidato e brillantato anodicamente per un elevato rendimento luminoso.

Sorgente luminosa LED.

Emissione diretta.

Sistema di fissaggio a sospensione con gancio in acciaio zincato.

## **A richiesta**

- Gruppo di emergenza autoalimentato 1h, dove le dimensioni lo consentono.
- Temperatura di colore del LED K diversa da quella specificata.
- CRI > 90.

Turned sheet aluminium body painted with epoxy powder after phosphating high resistance corrosion with phosphochromatizing treatment.

Tempered transparent thermal anti-shock glass.

Fixing ring in galvanized plate with opening handle and safety lock.

Silicon gasket.

Heat-sink: anodized aluminium die-casting.

Nylon Cable gland PG11 for three-pole cable.

Built in electronic ballast CAE, DIM dimmable 1-10V or DALI.

Turned aluminium reflector 99.85% oxidised anodised and polished to a high luminous efficiency.

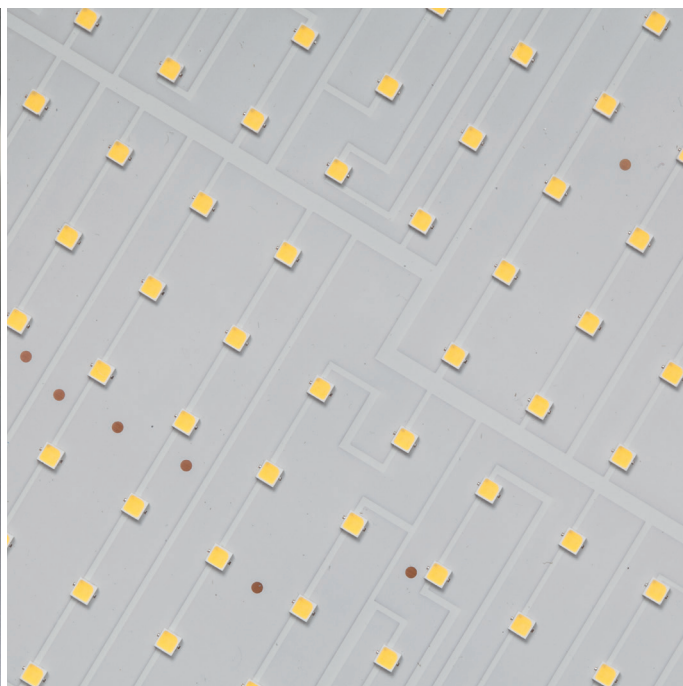
Light source LED.

Direct light emission.

Suspension mounting system with galvanized steel hook.

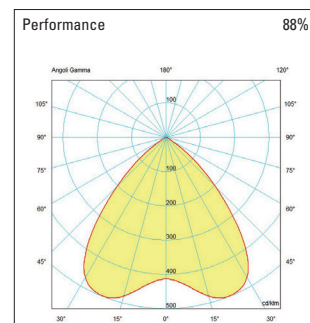
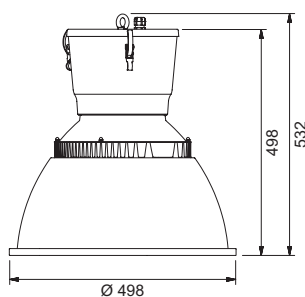
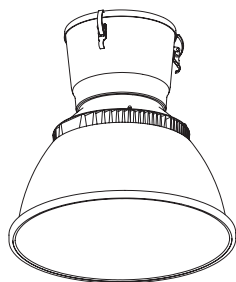
## **On request**

- Emergency kit 1 hour where size allows.
- LED color temperature K different from specified one.
- CRI > 90.



# DN LED

IEE = A+

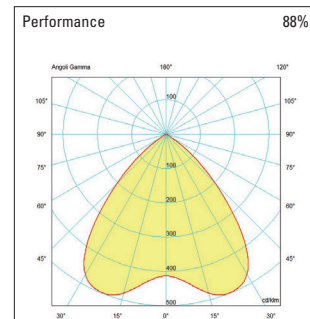
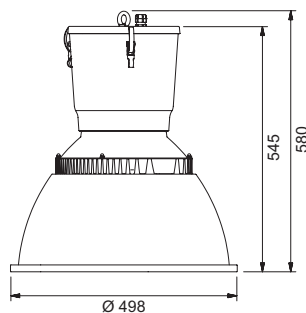
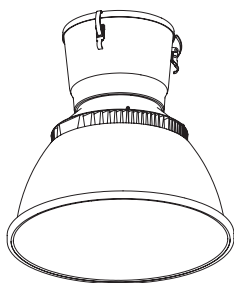


Lumen*	Watt**	Ta***	K Kelvin	peso weight	codice code	alimentazione power supply	colore color
16.700 lm	140 W	-25° +40°	4.000 K	9 Kg	<b>DNL140N</b>	— CAE elettronica electronic <b>DM</b> dimmerabile dimmable 1-10V <b>DL</b> DALI	<b>02</b> nero black

accessori accessories	codice code
Griglia di protezione. Protection grid.	<b>GDP</b>
Vetro sabbato. Sanded glass.	<b>VSDP</b>

# DN LED

IEE = A+



Lumen*	Watt**	Ta***	K Kelvin	peso weight	codice code	alimentazione power supply	colore color
24.000 lm	185 W	-25° +40°	4.000 K	11 Kg	<b>DNL185N</b>	— CAE elettronica electronic <b>DM</b> dimmerabile dimmable 1-10V <b>DL</b> DALI	<b>02</b> nero black

accessori accessories	codice code
Griglia di protezione. Protection grid.	<b>GDP</b>
Vetro sabbato. Sanded glass.	<b>VSDP</b>

\* Lumen nominali max a 25° (lumen max 65° -10%). Flusso totale apparecchio fare riferimento alla performance dell'apparecchio. Nominal lumen max 25° luminaire total light flux refer to luminaire performance.

\*\* Potenza Watt totale assorbita. Watt power totally absorbed.

\*\*\* Ta temperatura minima e massima d'esercizio. Ta minimum and maximum ambient operating temperature.

Led sources evolution takes to a continuous and favourable variation of the lumen/watt ratio. For more information please contact Ideallux technical dept. Ideallux s.r.l. reserves the right to carry out any improvements and alterations to products at any time.